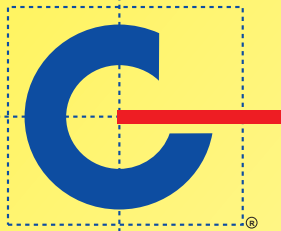


SPECIAL ISSUE ON ENERGY MANAGEMENT



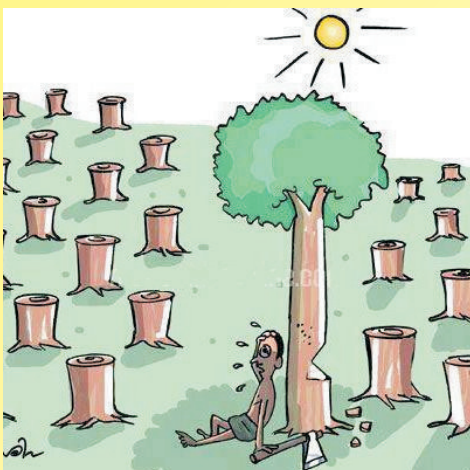
JAS-ANZ



M 1900799IM



Q M 0 0 0 9
E M 0 0 0 3



Wars of the future will be fought over water



SAVE TREES !
SAVE WATER !!
STOP THE WAR !!!





Message From
the desk of :-
Rajesh Kataria
ICS Udaipur
(Manager)

उर्जा बचत -एक आवश्यकता

क्या आप उर्जा बचत में विश्वास रखते हैं ? या इसे महज एक नारा समझ कर नजरअंदाज कर देते हैं ? हम में से कईयों का सोचना है कयिह हमारी नहीं ,सरकार की जरूरत है। बजिली की कमी हो रही है तो इसकी देखभाल बजिली बोर्ड करेगा ,हम क्यों करें ? कार्यालय से बाहर जाते समय वातानुकूलक यंत्र, पंखे, ट्यूबलाइट, संगणक यंत्र इत्यादि शुरु रहते हैं ,तो हमें इससे क्या लेनदेन ? बलि हमें थोड़े ना भरना है। या हम में से कई सोचते है कि हमारे अकेले के बचत करने से क्या होने वाला है ? हम यह सवाल भी अपने दिलो दमाग में ला सकते है कि हमारे पास तो हमारी आवश्यकताओं से अधिक कुछ खास नहीं है ,क्यों हम अपने आप को नरियंत्रित करें ? अपने देश को पूरण रूप से वकिसति करने के लिए हमें अन्य वकिसति देशों में जो कुछ हो रहा है उससे

सीख लेने की आवश्यकता है। उर्जा बचत में हम सबका सहयोग अत्यंत आवश्यक है ? यदि उर्जा का उपयोग सोच समझ कर नहीं किया गया तो इसका भंडार जल्द ही समाप्त हो सकता है।

अपना भवषिय उज्ज्वल बनाए रखने के लिए वर्तमान परिस्थितियों में सभी तरह की उर्जाओं तथा इंधन की बचत अत्यंत ही आवश्यक है ,क्योंकि आज हम बचत करेंगे तो ही भवषिय सुवधाजनक रह पाएगा। आवश्यकतानुसार आज वदियुत की आपूर्ति में कमी तथा भारनयिमन (लोडशेडिंग) होना एक आम बात हो गई है। हमें उन दानियों को भूल जाना होगा जब पूरे 24 घंटे सतत वदियुत आपूर्ति होती रहती थी। खंडति वदियुत पूर्ति और भारनयिमन /लोडशेडिंग के समय में लगातार बढ़ोतरी होना इस बात की ओर इशारा करता है कि आज वाकई में वदियुत उर्जा की जतिनी मांग है उतनी पूर्ति नहीं हो पा रही है। हमारे वदियुत उत्पादन केंद्र की उत्पादन क्षमता इतनी नहीं है कि बढ़ती हुई मांग की पूर्ति कर सकें। यह बात सर्रिफ वदियुत के संबंध में ही नहीं ,बल्कि पेट्रोलियम पदार्थो के संबंध में भी लागू होती है। पेट्रोलियम पदार्थों की नरिरत बढ़ती हुई मांग तथा नति नई बढ़ती हुई कीमतें और पेट्रोल पंपों में बार-बार पेट्रोल समाप्त का बोर्ड दिखाई देना भवषिय में आने वाली समस्याओं का संकेत है। हमें नश्चित तौर पर इन मुद्दों की ओर ध्यान देना होगा क्योंकि उर्जा के भंडार प्रकृति में सीमति है और हमें संभलकर आवश्यकतानुसार इनका उपयोग करना अनविर्य है। साथ ही उर्जा बचत के उपायों को शीघ्रतापूर्वक और सख्ती से अमल में लाए जाने की जरूरत है तथा प्रत्येक नागरिक को इसमें जुट जाना चाहिए। बचत चाहे छोटे स्तर पर क्यों न हो ,जरूर कारगर होगी क्योंकि बूंद-बूंद से ही सागर भरता है। आज हम संभल कर उर्जा के साधनों का इस्तेमाल करेंगे तो ही इनके भंडार भवषिय तक रह पाएंगे। कोशिश जमीन स्तर से की जाए तो आकाश छूने में समय नहीं लगेगा। बशरते देश का प्रत्येक नागरिक इस दशिा में जागरूक हो तथा हर संभव उर्जा बचत करें तथा औरों को भी इसका महत्व बताएं।

आज यदि हम उर्जा की बचत करेंगे

SAVE TREES

It is not so much for its beauty that the forest makes a claim upon men's hearts, as for that subtle something, that quality of air that emanation from old trees, that so wonderfully changes and renews a weary spirit.

Trees are poems that earth writes upon the sky,
We cut them down and turn them into paper,
This may record as our emptiness.

One tree provides enough oxygen for 5 people
Just 30 trees can absorb our full annual carbon production
Trees filter our water and soil, and fight erosion

They increase neighborhood desirability & escalate property value up to 20% & can energy and money for heating and cooling up to 15%.
Trees are the oldest living organisms on earth so grow more trees.



SAVE WATER

What you can do to conserve water?

Use only as much water as you require.

Close the taps well after use.

While brushing your teeth do not leave the tap running, open it only when you require it.

See that there are no leaking taps.
Get a plumber to come in and seal all leaks.

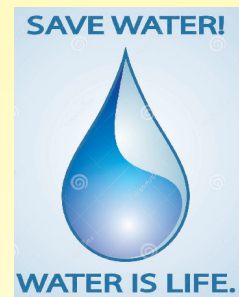
Use a washing machine that does not consume too much water.

Do not leave the taps running while washing dishes and clothes.

Install small shower heads to reduce the flow of the water.

Water in which the vegetables and fruits have been washed can be used to water the flowers and ornamental potted plants.

At the end of the day if you have water left in your water bottle do not throw it away, pour it over some plants.



Delayed Payment Regulations



Message From
the desk of :-
President
UCCI

Amongst many anxieties, the number one for any Micro or Small Enterprise is too late receipts of payments from their Buyers who are mostly large industries or Govt./Semi-Govt. organizations. To extend a helping hand to them specific provisions are being made under the MSMED Act, 2006. Though there are diverse views on these provisions, as a Micro or Small Enterprise, one must know what these provisions are, being their legal right. This is also a guide to the Buyers to formulate the payment system accordingly.

Section 15 of the MSMED Act is the base regulation. It says, "where any supplier supplies any goods or renders any services to any buyer, the buyer shall make payment therefor on or before the date agreed upon between him and the supplier in writing or where there is no agreement in this behalf, before the appointed day: Provided that in no case the period agreed upon between the supplier and buyer in writing shall exceed forty-five days from the day of acceptance or the day of deemed acceptance.

Before further analysis, let us understand the phrases used in this section, 'Supplier' means any Micro/Small Enterprise who has filed a memorandum under the MSMED Act, 2006; 'Buyer' means whoever buys any goods or receives any services from a supplier for consideration; 'Appointed Day' means the day following immediately after the expiry of the period of fifteen days from the day of acceptance or day of deemed acceptance of any goods or services by a buyer from a supplier; 'Day of acceptance' means the day of the actual delivery of goods or the rendering of services; or where an objection is made in writing by the buyer regarding acceptance of goods or services within fifteen days from the day of the delivery of goods or the rendering of services, the day on which such objection is removed by the supplier; 'Day of deemed acceptance' means where no objection is made in writing by the buyer regarding acceptance of goods or services within fifteen days from the day of the delivery of the goods or the rendering of services, the day of the actual delivery of goods or the rendering of services. Two cases have been made out by the section 15 of the MSMED Act. One is where written agreement as to payment between the parties, namely Buyer & Supplier. Second is absence of such agreement. In both situations the maximum period is 45 days from the day of acceptance or deemed acceptance as the case may be. In other words the payment is to be made on appointed day, which falls after 15 days from the day of acceptance or deemed acceptance. Thus the normal period for payment comes to 60 days [45+15].

The Act has also envisaged a situation in which the buyer has some objection. In such circumstances, the buyer is required to register his objection within 15 days from the day of delivery to him with the supplier in writing. Oral objection is not permitted. Supplier has to remove that objection and the day on which the objection is being removed will be the day of acceptance, and in such cases the time period certainly will exceed 60 days depending upon the day of acceptance. Failure to pay within stipulated period as above attracts interest. Section 16 is ruling one in such cases. It makes amply clear that the buyer has to pay compound interest with monthly rests at three times of the Bank Rate notified by RBI. Interest is to be paid from the appointed day. It, therefore, follows that payment is to be made before appointed day and if not paid, the buyer is to pay compound interest with monthly rests at the rate of 27% [9% being the current Bank Rate], from the appointed day. Of course the buyer has to pay the total sum; principal amount plus interest.

According to the Section 23 of the MSMED Act, 2006 the interest paid or even payable as per provisions under this Act shall not be allowed as a deduction under the Income- tax Act while calculating the income of the buyer for the relevant year. A corresponding provision has also been made in the Income-tax Act. This provision is being aimed at inducement for prompt payment by buyers for it adds the interest paid or payable into the income and may result in higher tax on income of buyers. Prima facie, to protect the interest of Micro & Small Enterprises this provision is indeed deterrent as it is compound interest at monthly rests at the rate of 27 per cent.

There is an obligation on the buyers to furnish the information of interest paid or payable or accrued but unpaid alongwith principal amount in their Balance Sheet & annual accounts. This is also to regulate payments within 60 days. For noncompliance of it, penalty of Rs. minimum Ten Thousand has been prescribed under the MSMED Act.

For redressal of disputes between the parties, machinery of Micro and Small Enterprises Facilitation Council [MSEFC] has been provided. The State Government has to constitute MSEFCs in the State and also to frame Rules for their functioning. The MSEFC shall have minimum three and maximum five members out of which one has to be an office-bearer or representative of MSE Association.

The supplier can make reference to MSEFC for the recovery of dues from the buyer. The MSEFC has first to attempt conciliation in the matter. If it is not successful, it has to take up the dispute for arbitration and give its verdict. The MSEFC has to decide every reference made to it within a period of ninety days from the date of making such a reference. Needless to mention, the order passed by the MSEFC is binding on the parties to the dispute. But a buyer may go to the court in case he is not satisfied with the decision of MSEFC. In such circumstances, again to protect the interest of MSEs, a specific provision via section 19, has been made which bars the court to admit the case unless seventy-five per cent of the amount in terms of decree of MSEFC has been deposited by the buyer in the court. In other words to appeal in court against the award of MSEFC the buyer has to deposit three-fourth sum of the decree of MSEFC in the court upon which court may entertain the application.



Message From
the desk of :-
Umesh Kumar
Jha

Adoption Of Modern Technology In Marble Mining

India is one of the few countries in the world possessing a wide spectrum of dimensional stone - vise Granite, Marble, Sand Stone, Lime Stone, Slate and Quartzite etc. The Indian stone Industry has evolved in to the production and manufacturing of dimensional stone blocks for monumental and building purposes, processed monuments and tomb stone, structural slabs in all forms, sculptures and artifacts, calibrated modular tiles, cobbles, cubes, kerbs, land scape garden stone etc. India is the largest producer of stone in the world accounting for about 27-30% of world stone production, Rajasthan has major share and in case of marble it accounts for about 95%.

The dimensional stone industry in India is well equipped with modern technology with wide spread use of Excavators, Front end loaders, jet burners, Diamond wire saws, DTH Drills, Line Drills, Derrick Cranes ,Mobile Cranes, Block Handlers, Hydro bags, Hole Finder and Dot Lasers etc.

Scientific studies of Mineral deposit before development of the mine is must. It is very difficult to know the behavior of the deposit and depth without making proper scientific studies. This is also important for making heavy investment in the development, selection and purchase of mining machineries. It is desirable to under take exploratory drilling to estimate the quality and quantity of the mineral deposit after geological study and mapping out the whole lased area carefully. This study also avoids wasteful investment on the development of the mine.

ADOPTION OF MODERN TECHNOLOGY IN MARBLE MINING

Adoption of modern technology in dimensional stone industry is the need to justify its potential as the largest producer of dimensional stone in the world. Use and application of modern technology and various type for marble mining are significant to achieve better recovery with higher percentage of blocks. Some of the equipment and techniques are described as under:

HYDRAULIC EXCAVATORS & DUMPERS / TIPPERS

In earlier days, excavators were used to remove overburden and clean the working faces. Gradually concept to utilize hydraulic excavators for toppling of large marble benches weighing more than 1500 MT or more, segregating sized blocks and waste marble pieces, installing LD4 or other drills for drilling co planner holes, mounting hydraulic hammers for breaking large waste rock pieces for transportation was perceived. These equipments are very useful for widening of the gaps to accommodate Air pillows, removal of sized blocks and shifting of the heavy blocks weighting 20-30 MT. from one location to other. The use of large capacity tippers / dumpers have reduced the traffic density in large mechanized mines and reduced the cost per km transportation of overburden / waste rock. Volvo tippers with 30 MT. carrying are used in many marble mines.

DRILLING

Drilling is an important operation in marble mining. Drill machines are used for making co-planner holes, for passing diamond wire for different cuts, Performa tic drilling for achieving a slot for quarry front cutting and line drilling for sizing of blocks.

So far 4" dia. holes were drilled for passing diamond wire but the use of 3 1/2" holes has reduced the drilling time and cost per meter without any difficulty for diamond wire passing. The use of self propelled wagon drills has also resulted in enhanced drilling rate, more manoeuvrelity and elimination of ancillary equipment for installing drills.

CASTING TECHNOLOGY

Quarry front cutting / Gally making is a most operation in marble mining. Earlier this is used to be achieved by quarry master – diamond wire saw combination. In this method 115mm dia. holes were drilled by quarry master drill machines at close spacing, partition between two holes was broken by percussive motion of this drill using a specially made bit with side flaps. The slot of desired length & width is then connected to two vertical or horizontal holes of 115mm dia. and diamond wire is passed for marking different cutes for obtaining marble blocks. This was time consuming process and substantial quantity of marble was wasted. Then came the era of jet belt saw-diamond wire saw combination (Chain saw machine is not suitable for areas having high quartz contents which frequently damage the TC inserts). This technique was costly with limitation of 3 m cuts and the cutting speed was also low.

Presently Blind cut technique and diamond wire saw combination is used which is cost effective as well as time saving. The technique was known earlier but it could be with lot of development, construction of required structure, selection and proper sealing and encasing of bearing at lower end of the structure etc. In this technique two vertical holes of 175 mm dia. up to desired depth are drilled with the help of mega drill machines. These holes are connected with 115 mm dia. horizontal holes for passing diamond wire for bottom and side cuts as well as to ensure a passage for marble slurry during actual cut. Both the channels with diamond wire are lowered in these holes and connected to a diamond wire saw.



Message From
the desk of :-
Prasad Kulkarni
Regional Manager
ICS West V

How can we save energy?

Saving energy means decreasing the amount of energy used while achieving a similar outcome of end use. Using less energy has lots of benefits – you can save money and help the environment. Generating energy requires precious natural resources, for



Why is it important to save energy?

If people use less energy, there is less pressure to increase the available supply of energy, for example by constructing new power plants, or by importing energy from a different country.

What does “life-cycle” mean? What does it have to do with energy use?

Nearly all everyday products have an impact in terms of energy, especially when you consider their energy requirements across the whole life-cycle: production, use and end-of-life. In many cases the use phase is dominating. Plastics, for example, are one of the most resource-efficient materials available. In their use phase, plastics products help to save more energy than is needed to produce them: For example, when you choose a bottle of water packaged in a light weight material such as plastic, remember that lighter packaging requires less energy for transport. Thus, less fuel was used to power the truck that delivered those plastic bottles.

What can I do to save energy?

There are many sources on the web that give you ideas of what you can do to save energy. Here are a few ideas to get you started:

How much energy can be saved

Perhaps your next question may be “How much energy can be saved ?” The following is the list of several measures with their estimated energy savings :

Energy Conservation Opportunities	Estimated Energy savings
Maximize use of daylight	50-60% of lighting cost
Reduce num of lighitings	15-28% saving in electricity
Maintain annual check up and adjustment of AC	15% cooling cost
Use of insulating glass	10-13% cooling and heating cost
Provide adequate insulation for wall and roof	20% heating and cooling cost
Set back domestic water heater from 140F - 110 F	6-12% hot water cost

Significance Of Water Management Plan At Mine Site & Its Best Practices

Dr. Neeraj Srivastave,shiv Lakhara

ABSTRACT

The best practice for environmental goal of mine site water management is to protect the environmental values of creeks and other water bodies affected by mining operations. Environmental values, are particular values or uses of the environment that are conducive to public benefit, welfare, safety or health and that require protection from the effects of pollution, waste discharges and deposits. Several environmental values may be designated for a specific water body. A water management plan consistent with best practice must consider and/or develop site-specific standards, targets, operational or contingency plans and procedures. It is reasonable for a community to expect that the nation's mineral reserves will be mined in an ecologically and socially responsible way and that mining operations reflect broader principles of Total Catchment Management. Mine site water management seeks to control or manage various hydrological processes with outcomes that fluctuate randomly. The mine site water balance is managing water volumes and their quality to meet environmental objectives, processing plant needs, and mine development needs over time. Once that is defined, the mine site water balance is the tool used to design the water management system.

Keywords: Mine Site Water Management Plan, Monitoring, Impact, Best Practices.

INTRODUCTION

A comprehensive planning process is the best way to realize the multiple objectives of a mine site water management plan. The planning process should include in the first instance, adopting a catchment-based approach to mine site water management. This will identify current and potential water management issues in the catchment containing the mine leases, and will assess how mining may aggravate the problems. This approach will ensure mine site water management takes account of catchment issues as well as lease-area ones. Incorporating public consultation to ensure all issues are identified and addressed. Planning to address the three phases of mining i.e. development, operation and de commissioning.

Recognizing the cost-effectiveness of jointly formulating mine site water management and mine plans. This optimizes coordination of mine site infrastructure and mine site water management measures. Recognizing the most cost-effective solutions to mine site water management issues come from an integrated 'whole of mine' investigation, rather than investigating specific issues in isolation and on an ad hoc basis. A risk management approach to how changing levels of flood, drought and water quality risks should be addressed. A risk management approach to identify and deal with operational risks that generate potentially adverse water management consequences. Undertake appropriate technical studies to adequate standards. Identify and assess a full range of management measures and options. Identify and implement appropriate performance indicators. A water management plan consistent with best practice must consider and/or develop site-specific standards, targets, operational or contingency plans and procedures for all of the following

A. EXPECTATIONS OF COMMUNITY

It is reasonable for a community to expect that the nation's mineral reserves will be mined in an ecologically and socially responsible way and that mining operations reflect broader principles of Total Catchment Management. Best practice principles dictate that mine site water management must strive to ensure that during the course of mining, downstream water users and riparian habitats (and their environmental values) are not adversely affected by the impact of mining operations. At the end of mining, appropriate mine site water management measures will be implemented to sustainably protect water quality and preserve water users and riparian habitats downstream. There is effective liaison with stakeholders from areas affected or likely to be affected by mining operations, and that their concerns are addressed. The community is consulted and has access to information, from mine planning stages to mine closure.

March Monthly 2014 Horoscope And April Monthly Astrology

Aries:- The rashi lord Mars is placed in 6th house (Retrograde). Jupiter occupied 3rd house entire month is good. Saturn is in the 7th house standstill. Ketu & Rahu in 1st and 7th houses are average. Work front could be very hectic in the initial phase of the month, multitasking will be the need of the hour. This month Venus and Mercury positions are quite good and Mars placement will give success and simultaneously impulse on minor things. Mercury the significator for education will be excellent this month. Concentration level will be good during the first part of the month. Proper attention should be given to health. Practicing meditation and yoga will make to stay away from health issues.

Taurus:- The rashi lord Venus placed in 10th house is a good sign. Jupiter placement in 2nd house is progressive. While Saturn (10th and 11th lord) is in the 6th house is in normal strength. This month opportunities for grow will be good. Your hard work and sincerity will get noticed by superiors and in turn you will be assigned with confidential tasks. Mercury is good this month. Anger and short tempered behavior would take away potential success in studies. Unnecessary thoughts will give loss of confidence, it give chance for second option. Mercury is in normal strength this month. Student will need more hard work this month. They will have interest to learn new subjects. Examinations during this month will bring normal results. You need to be careful of your overall health. Headache and stomach problems may trouble you this month.

Gemini:- It is an encouraging month for finishing of pending projects. Hard work will be the key for your success. The gains might be limited and vigilance on expenditure is must. Auspicious events will take place at home. Saturn is in the 5th house with Rahu is neutral. Mercury and Venus are excellent this month. Jupiter will be standstill entire month. It is a normal month for transforming love affairs into marriage. Mercury is good this month. Anger and short tempered behavior would take away potential success in studies. Unnecessary thoughts will give loss of confidence, it give chance for second option. This month you should exercise more care on health; healthy diet will save from digestion problems, small ailment should not be neglected and proper medical care to be taken.

Cancer:- The transit of Saturn & Rahu in 3rd house will catch up your thoughts and improvement in life. Mars placement gives way to success and put impulsive in unnecessary things. Jupiter gives good results during this month. Your job will be at stake if you don't travel, your enemies at work will try to tarnish your name, image and reputation. You may cheated by your subordinates. The second lord Mercury placement in 7th house will give average results, even Mars position is also normal. Communication may enhance and a new person may enter in life. Students will postpone works during first half of the month later on they will bounce back and will do well. They will be successful in competitive examinations, and may get some financial assistance from Government / private charities. It is a time to avoid travels as it gives more physical stress.

Leo:- Saturn's transit along with Rahu over 2nd house is standstill, things will get settled with struggles and hurdles as you are going in Sade-Sathi. Transiting Jupiter in 10th house would be influencing to 2nd, 4th & 6th houses. Ketu placement in 8th house is average. Do not allow a bad mood to affect output at work; success would be completely dependent on hard work and focus. The transit of Jupiter in the 10th is normal but Saturn causing Sade-Sathi is bad to ruin your personal life. Mars position will give impulsive nature. There may be differences in attitude in married life and may lead for separation from family members. Mercury position is quite average during the month. Students need to put more efforts in studies; communication gap between parents and children seems to be continued. Students may lose their confidence on studies, which gives laziness and unpunctual. Higher educational opportunities may get postponed.

Virgo:- Saturn's transit along with Rahu over 2nd house is standstill, things will get settled with struggles and hurdles as you are going in Sade-Sathi. Transiting Jupiter in 10th house would be influencing to 2nd, 4th & 6th houses. The transit of Jupiter in the 10th is normal but Saturn causing Sade-Sathi is bad to ruin your personal life. Mars position will give impulsive nature. There may be differences in attitude in married life and may lead for separation from family members. Mercury position is quite average during the month. Students need to put more efforts in studies; communication gap between parents and children seems to be continued. Students may lose their confidence on studies, which gives laziness and unpunctual. Higher educational opportunities may get postponed.

Libra:- The rashi lord Venus is in 5th house. Transit of Mars & Sun gives average results. Jupiter in 9th house is good, transit of Rahu and Ketu are in helpless mode. It's definitely not that much great time to start anything new. You may experience unnecessary fears during this month, keep your temper and tongue under control. Don't Take hasty decisions and let your feet be firmly grounded; in need, take experts advise. There is Rahu in the 1st house and the second lord Mars in transit will join radically on Moon. This month your family environment would be normal. There would be good scope on focusing your family needs and deeds. Mercury placement is average. It could be a neutral month for students, but those who are in higher education can get success with their efforts. Getting opportunities for higher education gives more fruitful results. Schedule of timings should be maintained properly.

Scorpio:- Jupiter in 8th house gives negative impact on results. Saturn transit in 12th house put you in worry and tense. This month transit of Mars will be normal. Venus & Mercury results are satisfactory. Careers in Automobile, Science & Technology, and Pharmacy may give comfortable growth. Avoid getting into controversies at work area, and additional responsibilities may kill your personal time. Jupiter being there in 8th house will create more obstacles in personal front. Love matters would give average results. Your partner needs some specific answers from you, which is going to stabilize your relationship. Transit Jupiter, Saturn and Rahu are adverse. But Venus position at 4th house (Directional strength) may be encouraging. Students will work hard and be very competitive to achieve their goals. You will fare well in exams; dependence on other students should be strictly avoided.

Sagittarius:- The Rahu-Ketu axes over the 11th and 5th houses are good. 7th house Jupiter is strong. Mars placement in 10th house will give almost good results entire month. Creative approach towards career will bring good returns. Try to remain focused in your projects and make the most of the favorable opportunities. Careers in banking and geological science sectors may give fruitful results. The 5th lord Mars placement in 10th house would give normal results. Jupiter placement in 7th house will be quite progressive and helpful in all spears of life. Love matters will be positive but the level of opportunities might be lower than usual this month. Jupiter the rashi lord in the 7th house, Saturn in the 11th house having aspect over the 5th house; and Mercury, significator for education in the 3rd house are going to produce perfect results. It will be a favorable month for students.

Capricorn:- The transit of Jupiter in 6th house will have mixed results. Mars position would continue to be average. Saturn position is standstill; Rahu and Ketu are like putting more obstacles in profession. Position of Jupiter is neutral. Venus position at 2nd house will give good results. Rahu & Ketu positions in 10th & 4th houses will give average results. There would be love, mutual respect and confidence among couples. Transit of Mercury is good. During this month, Students you may get more impulse and may cause to loss of confidence. The first part of the month will be average for students, your creative abilities would give average results and you have to try well in exams.

Aquarius:- Placement of Jupiter at 5th house is a good transit for this sign. Mars placement is normal; Rahu-Ketu axis is in the 9th and 3rd houses, which are in positive mode. Career will be better than before. Creative thinking will bring good results. Sharpen your skills and attitudes to make most of the favorable energies. There might be some pressure during the last week. Careers in Automobile and medicine may give identity in work. The rashi lord Saturn over the 9th house is neutral. Most of the month will give comfort and happiness. Placement of Jupiter and Mercury is normal for higher education. Professionally work environment will be good and pressures will reduce. Your relations with your boss will improve. However, you should try to stay away from confrontations.

Pisces:- Jupiter the 1st & 10th lord is placed in 4th house is normal this month. Mars, Mercury and Venus are neutral this month. This month will be a mixed period. The more people you know, the more success is likely to be. Hard work will bring you progress, but may not be up to the mark. Work environment will not be very easy. Transit of Saturn & Rahu at 8th house will definitely increase unhappiness and worries in personal and official life. Venus placement will increase strength to the position. New relationships may not be blossom. Students would focus on acquiring education and increasing their level of knowledge and confidence. There could be some intuitive ideas and opportunities which will give success in their respective works.

QUALITY BEGINS WITH YOU !!!!

ACHIVMENT

Natrajan Vaidhyathan, Manager (Q.A.), A.S.D.C.P. Ltd.

Yes! Quality is each & every one's responsibility. Each one involved in the Organisation, right from the security person at the gate to the top-most manager of the organization is responsible for Quality to satisfy the requirements of the immediate Customer, the ultimate user, the share-holders who have invested their hard earned money & the society & country at large.

This is the work-philosophy that is all-pervading today, and it has brought about huge development all around & prosperity to those who have become partners in this revolution. The one name which immediately comes to mind is that of the Japanese who have literally risen from the nuclear bomb ashes like the mythical Phoenix to startle the world with their enviable technology & quality of goods.

Yes, the Japanese have put in un-imaginable amount of perseverance & hard work to achieve something which even today many countries cannot emulate. But they have invested something more, which has blessed them.

Determination to make their country the Best!!!! Coupled with enormous self-discipline & innovative talent!!! The Kaizens, the Six-sigmas, the Total Quality Management programmes are all Stars in their own right, but can achieve nothing without a disciplined & determined workforce to make them deliver what they were designed to deliver. Also, there is abundance of degrees today, but a dearth of innovative talent. And, the thing being sorely missed is the national hunger to make the country the best. Unless these are cultivated by each & every individual, national progress will be, at best, stunted.

Thus, QUALITY BEGINS WITH YOU!!!!, may have a deeper connotation than is easily apparent, indicating subtly the need for an inner revolution & honest introspection at the individual level.



(ISO Program Valedictory at Udaipur)

This Edition Compiled and Presented by
ICS Udaipur Office Team

International Certification Services Pvt. Ltd.

Corporate Office

22/23 Goodwill Premises, Swastik Estate, 178 CST Road, Kalina, Santacruz (E),
Mumbai- 400 098. Maharashtra, INDIA.

Tel : 022-26507777-82, 42200900, 30608900- 4, Fax : 42200933, Email : info@icspl.org

Branch Offices

Ahmedabad 079 -26858687 Bangalore 080- 22384620 Baroda 0265-3202067 Belguam 09341370107
Chennai 044- 24719070 Goa 09322382887 Guwahati 09508622059, Delhi 011- 22042107 Hyderabad 040-23713335
Indore 0731-4076365 Jaipur 0141-2610291 Kanpur 0512-2262648 Kolhapur 09373107108 Kolkata 033- 32542986
Ludhiana 0161- 3230461 Mumbai 022-26507777- 82 Nagpur 09326175990 Nashik 0253- 3205994
Pune 020-25424204 Surat 09374658605 Shimla 09318671776 Udaipur 09314116813 Vapi 0260-3291135

Overseas Offices

Dubai +9714-3933343 / Nepal +9771-4258455 / Muscat +968-24499785 / Turkey +90-312-4471428
Doha +974-4670022 / Sri Lanka +94-112-433406 / Ukraine +380-633363468 / Romania +40-21-6652608
China +86-755-83038357 / USA +1-919-342-5772

Disclaimer

The article and information given by the authors / companies and ICS are based on their information and views; International Certification Services shall not be held responsible for the correctness of the data and information.

For Internal Circulation Only